

1. Title / Content Area:	Boggsville and the Santa Fe Trail
2. Historic Site:	Boggsville Historic Site, Bent County, Colorado
3. Developed by:	Adams 12 School District
4. Grade Level and Standards:	3-5 3 rd : 1.1, 1.2, 2.2, 3.1 4 th : 1.2, 2.2 5 th : 1.2, 2.2
5. Assessment Question:	Why is Boggsville a significant historic site on the Santa Fe Trail?
6. Contextual Paragraph	Boggsville was one of the most important trading locations and posts on the Santa Fe Trail. After Bent's Fort closed due to the reduction of the fur trade, Thomas Boggs married Ramalda LunaBent in 1846. She was heir of Cornelio Vigil. From Vigil, Boggs and his wife received a land grant, and the couple built an adobe home on a site two miles from the mouth of the Purgatoire River in 1866. In 1867, Boggs was joined by John Prowers who also built a home on the site. Both families raised crops, sheep, and cattle on the land. The settlement was short lived, but during occupancy served as a center for trade and education. Though never officially established as a town, Boggsville had all the elements of an early Colorado community and served settlers traveling the trails west, particularly the Santa Fe Trail. The adobe homes that still stand on the site today are representative of the region and were considered somewhat grand in scale for the time. To recognize and protect these buildings, which significantly contributed to growth and trade in the region, Boggsville was listed in the National Register of Historic Places in 1986.
7. Connection to Historic Preservation	Identified as a national Endangered Place by the National Trust for Historic Preservation in 2014 Boggsville is a registered landmark that serves as one of the most important historic building complexes on the Santa Fe Trail.



Document Set

The Santa Fe Route



<https://www.loc.gov/resource/g4052s.ct000190/>

GUIDING QUESTIONS:

1. What does this map show the reader about the Santa Fe Trail?
2. What route did the Santa Fe Trail take through Colorado and New Mexico?
3. What time period was this map created and for what purpose was it made?
4. Where would Boggsville be located on this trail map?

Boggsville Main Home - 1912



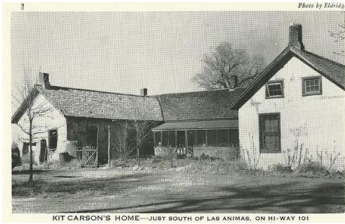
[http://www.bentcountyheritage.org/?s=boggsville
&p=gallery#!prettyPhoto\[main\]/3/](http://www.bentcountyheritage.org/?s=boggsville&p=gallery#!prettyPhoto[main]/3/)

GUIDING QUESTIONS:

1. What does this picture show about life at Boggsville?
2. Compare this photo to the other photo in this collection. What is different? What is the same?
3. How could the different sections of the building be used for different purposes?

Boggsville –Postcard

GUIDING QUESTIONS:



KIT CARBON'S HOME—JUST SOUTH OF LAS ANIMAS, ON HI-WAY 101

[http://www.bentcountyheritage.org/?s=boggsville
&p=gallery#!prettyPhoto\[main\]/1/](http://www.bentcountyheritage.org/?s=boggsville&p=gallery#!prettyPhoto[main]/1/)

1. What are the architectural elements of this home as shown in the photograph?
2. Why would a covered patio be needed for this home in SE Colorado?
3. What materials is the home constructed of?
4. Where would the materials be obtained?
5. Is there a purpose to the U shape construction of the building?

Assessment Question

Why is Boggsville a significant historic site on the Santa Fe Trail?

Response

This project was paid for in part by a History Colorado State Historical Fund grant

